

C&T: Primary Value Axis



Please Note

The following options are only available for charts, that offer linear axis:

- [Column Chart](#)
- [Line Chart](#)
- [Area Chart](#)
- [Scatter plot](#)
- [Bubble plot](#)

The **primary value axis** is the ("main") y-axis in your graph. It will most likely be displayed on the left side of your chart.

The screenshot shows a 'Component options' dialog box with a blue header and a close button. The 'Primary Value Axis' is selected in the dropdown menu. The 'AXIS' section has 'Display axis' checked. 'Thickness' is set to a medium value, 'Style' is 'Solid', and 'Color' is 'Black'. 'Opacity' is at 100%. The 'AXIS TITLE' section has 'Display axis title' unchecked. The 'AXIS LABELS' section has 'Display axis labels' checked. 'Font' is 'Default font', 'Size' is 'Choose size', and 'Alignment' is 'Auto Adju'. There are buttons for bold, italic, underline, and text color. The 'GRIDLINES' section has 'Show Gridlines' unchecked. The 'RANGE' section has 'Auto-range' selected. The 'TICKS' section has 'Display tick lines' and 'Auto-tick count' both checked. A 'Done' button is at the bottom right.

This screenshot shows the Primary Value Axis configuration for a Column Chart.

The following options are available:

The *Display axis* checkbox activates the axis, it will be visible next to your chart.

☒ Display axis

By default, this checkbox is set and your axis is visible. You can now go ahead to configure your axis.

Feel free to alter the style, thickness, color, and opacity of your axis.

AXIS
☒ Display axis
Thickness
Style
Color

You can label your axis by activating the *Display axis title* checkbox.

This will display a label next to your axis:

AXIS TITLE
☐ Display axis title

After activating the checkbox, you can enter a title in the *Axis title* textfield.

Furthermore, you will find a variety of format options, to adjust your font, its size, highlight, color and alignment.

Axis labels are the units of your axis. To configure the values, please refer to the [data series](#) section.

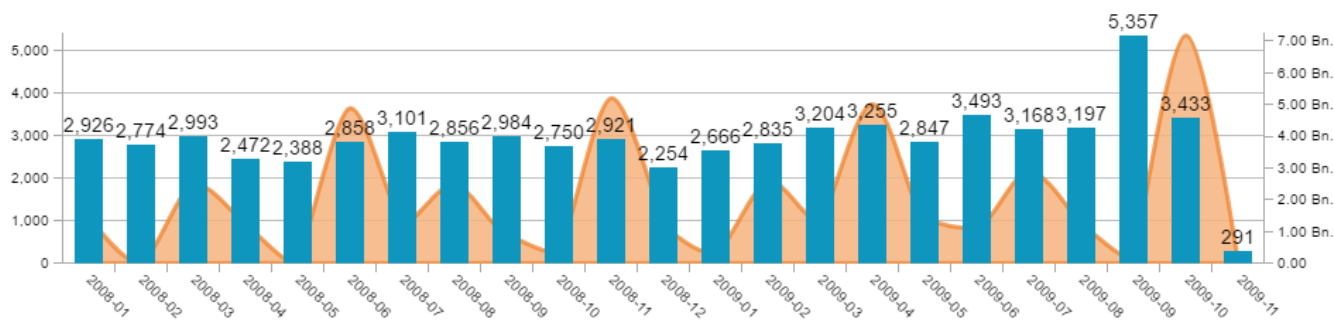
To show axis labels, activate the *Display axis labels* checkbox, which will introduce you to the following format options:

AXIS LABELS
☒ Display axis labels
Font
Size
Alignment

Use these options to alter the label's font, its size, highlight, color and alignment.

All changes will be applied to the whole axis with all included labels.

Value axis gridlines are **horizontal** lines that are visible in your graph.



For each axis label (either if they are visible or not, see above), a gridline is displayed after activating the *Show Gridlines* checkbox.

GRIDLINES

☒ Show Gridlines

Thickness

Style

Color

Opacity

100%

After you activated the gridlines, you can adjust the style, thickness, color and opacity of all lines.

By default, the value axis try to cover all values, starting at 0 (*Auto-range*).

However, you can focus your graph on a specific range, by activating the *Manual-range* checkbox:

RANGE

☐ Auto-range ☒ Manual-range

From

2000

To

3000

Please note however, that a range only applies for the axis, that you apply this range on.

If you use a secondary value axis, it won't be affected.

Ticks are small, horizontal label lines that are displayed between your value axis and its labels:



By default, ticks are enabled and thus visible in your graph for all axis.

☒ Display tick lines

To hide the tick lines, deactivate the *Display tick lines* checkbox.

By disabling *Auto-tick count* you can enter a number. Only this number (if greater than 0) of ticks and labels will be visible on your axis.

☒ Auto-tick count

Please note, that this does also affect your gridlines.
