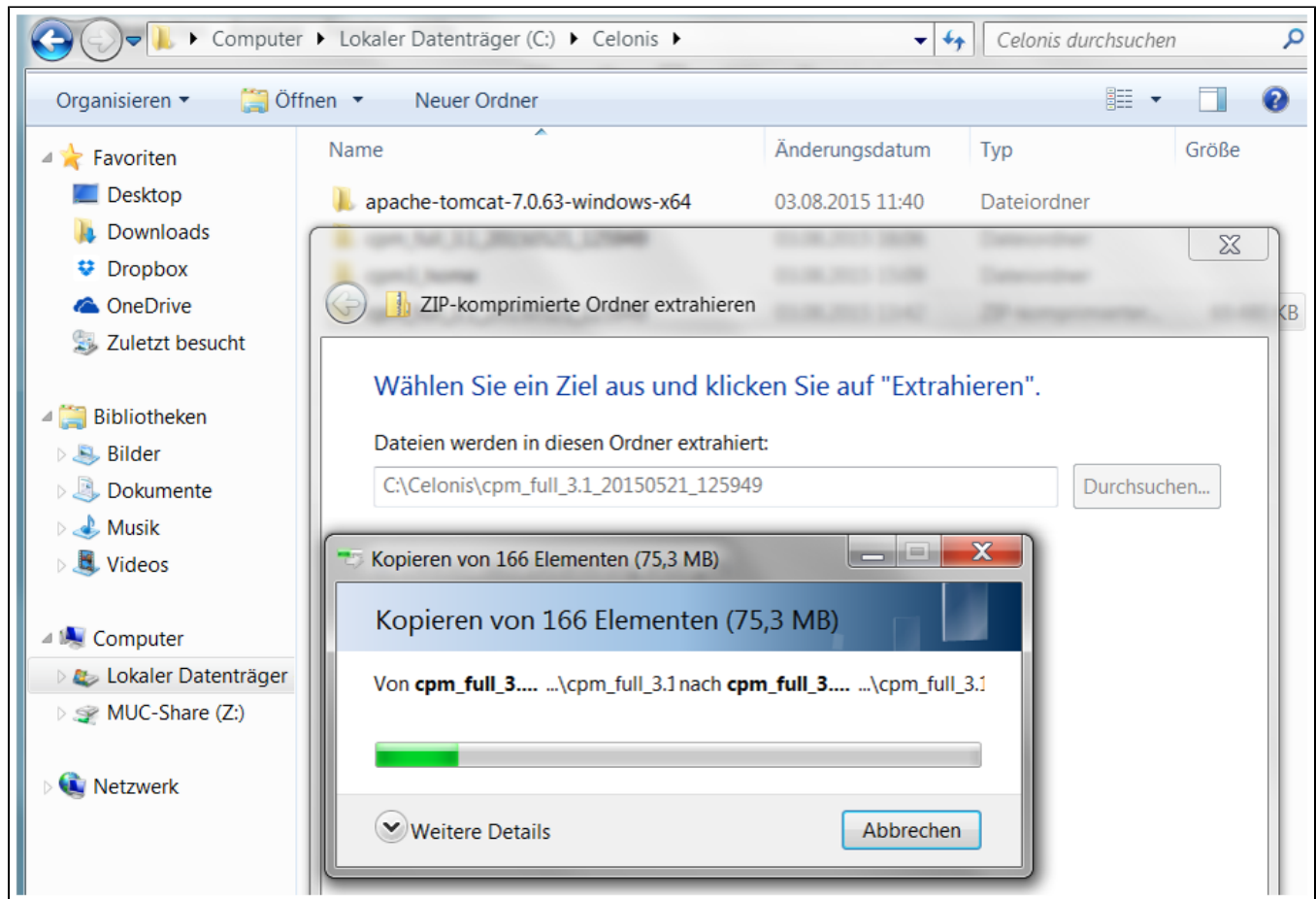


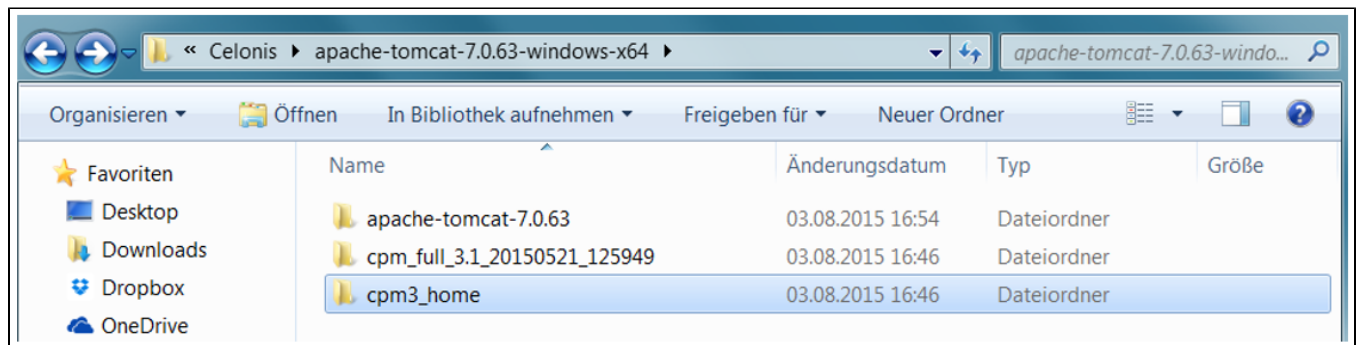
Installation of SAP Process Mining by Celonis

If the ending of the SAP Process Mining by Celonis application file name is .war change it to .zip . (If it is already .zip take this file) and extract it into the previous Celonis folder on your hard drive. Please keep the given file name, because it contains the version number of the SAP Process Mining by Celonis installation package. In this manual the SAP Process Mining by Celonis application name is cpm_full_3.1_20150521_125949.

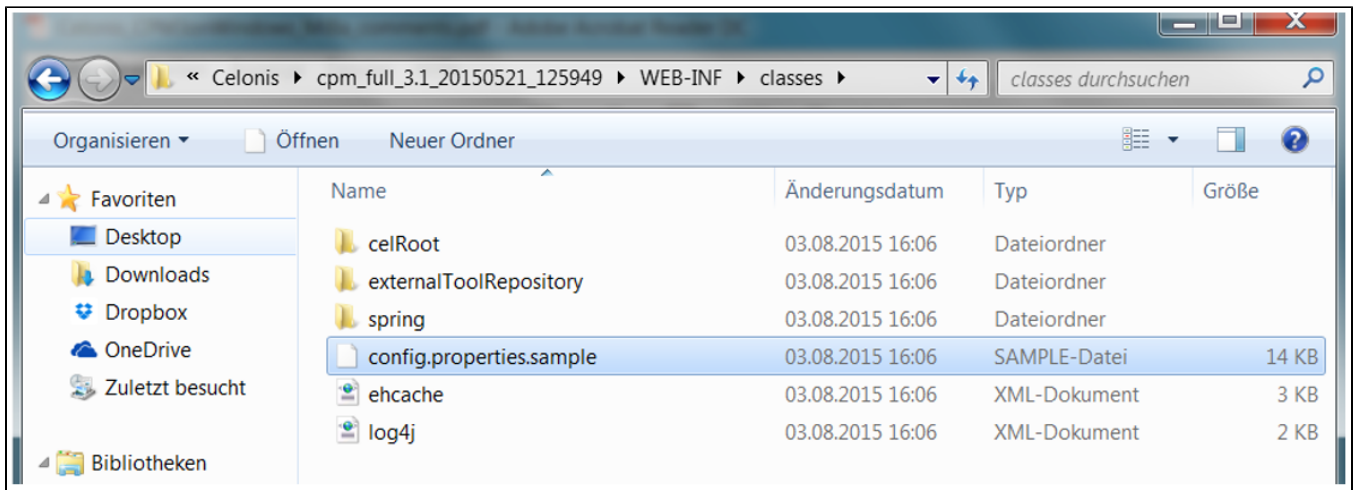
name structure: cpm_full_VersionNr_yyyymmdd_hhmmss



Create another folder called *cpm3_home*. This will be the folder the application uses to store its configuration.



Copy the *config.properties.sample* file from "*cpm_full_3.1_20150521_125949\WEB-INF\classes*" to the *cpm3_home* folder.



Rename the file to *config.properties* and open it in a text editor. This is the main configuration file for Celonis Process Mining - all options as well as these steps are explained in this file.

The section “**Database Configuration**” in the *config.properties* file describes the next steps you have to do.

Configure the database settings for the application server database. You can for example use a *H2 file database* on the app server or configure a database on your preferred DBMS.

Uncomment the part of the database you want to use and **adjust** the information as you can see in the following *H2 database* example.

```
# H2 (embedded) database
# -----
# You have to specify a path to your database directory here. A database
# inside this directory will be created automatically.
#
database.driverClassName=org.h2.Driver
database.url=jdbc:h2:C:/Celonis/cpm3_home/db/demo
database.dialect=org.hibernate.dialect.H2Dialect
database.username=demo
database.password=demo
```

Another important step in the *config.properties* file is to configure the *filesystem.writableroot* in the section “**System Paths**”. Here you should take the path to the *cpm3_home* folder. (C:\Celonis\cpm3_home)

```
# SYSTEM PATHS
# -----
# You can configure storage locations for your CPM3 installation.
# User files, etc. will be stored here. By default, user files
# are stored in the application directory.
# When running the software in production, you should always change these
# settings accordingly, otherwise a patch might break your file storage
# when not copied manually.

# The root configuration for writable files. Usually, this is the only
# property which you might want to change.
filesystem.writableroot=C:/Celonis/cpm3_home

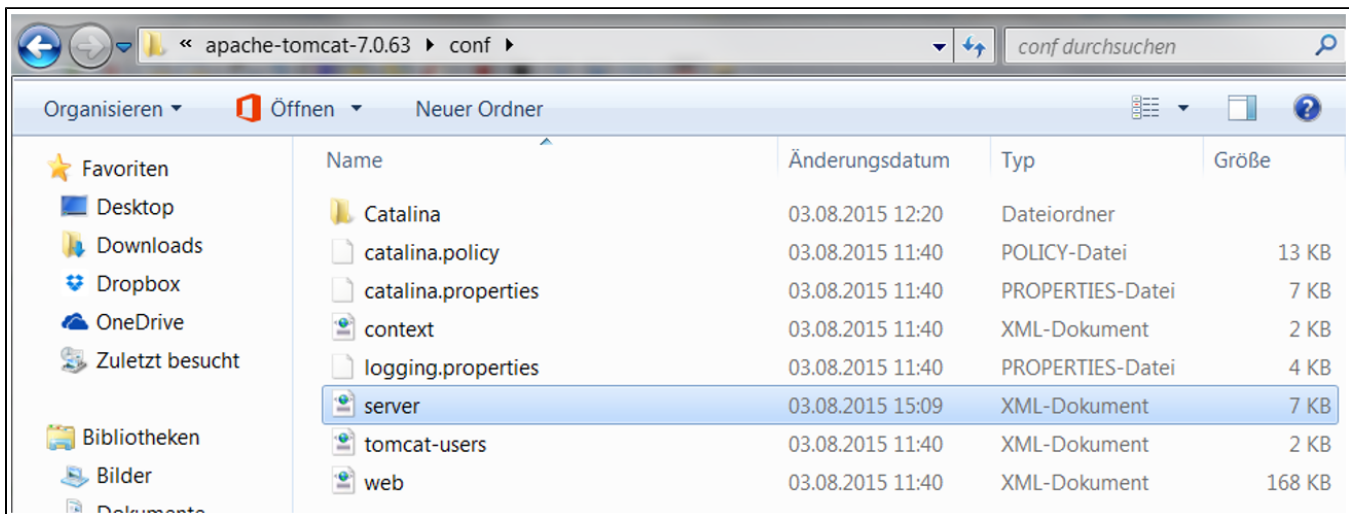
# The location of the user home directory for user up- and downloads.
filesystem.home=writable:home

# The path where the licenses are stored.
# Please note that in your home directory, the "licenses" folder is not created automatically.
license.path=writable:licenses

# Where to store the executable for external tools? Changing this is usually not necessary.
externaltool.executables=writable:externalToolExecutables

# The repository for the external tools - this should not be changed usually.
externaltool.repository=classpath:externalToolRepository
```

Set up the *config file location* in the application server's *server.xml* configuration file which is located in the *conf*-folder of the application server installation.



Expression to be inserted at the end of the *server.xml* file (On the following Screenshot you can see the exact inserting-section):

```
<Context path="/cpm" docBase="C:/Celonis/cpm_full_3.1_20150521_125949">
    <Parameter name="cpmConfig" value="file:C:/Celonis/cpm3_home/config.properties"/>
</Context>
```

Set the path to the unpacked application (*docBase*) and the configuration (*value*) accordingly.

```
<Host name="localhost" appBase="webapps"
      unpackWARs="true" autoDeploy="true">

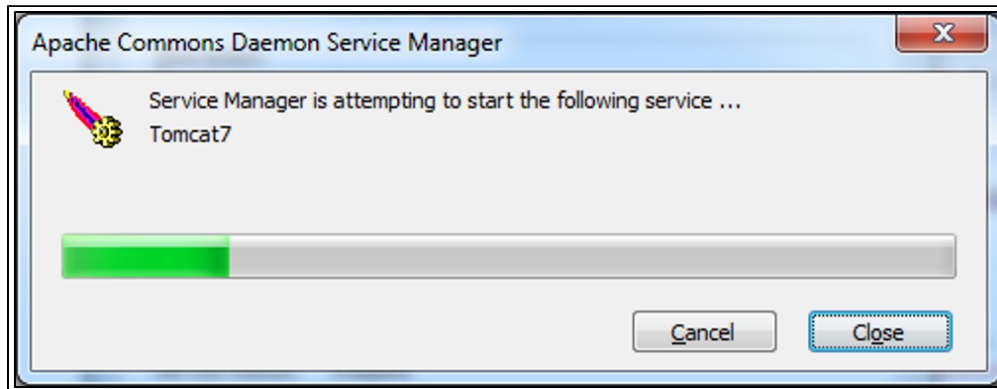
  <Context path="/cpm" docBase="C:/Celonis/cpm_full_3.1_20150521_125949">
    <Parameter name="cpmConfig" value="file:C:/Celonis/cpm3_home/config.properties"/>
  </Context>

  <!-- Access log processes all example.
       Documentation at: /docs/config/valve.html
       Note: The pattern used is equivalent to using pattern="common" -->
  <Valve className="org.apache.catalina.valves.AccessLogValve" directory="logs"
        prefix="localhost_access_log." suffix=".txt"
        pattern="%h %l %u %t &quot;%r&quot; %s %b" />

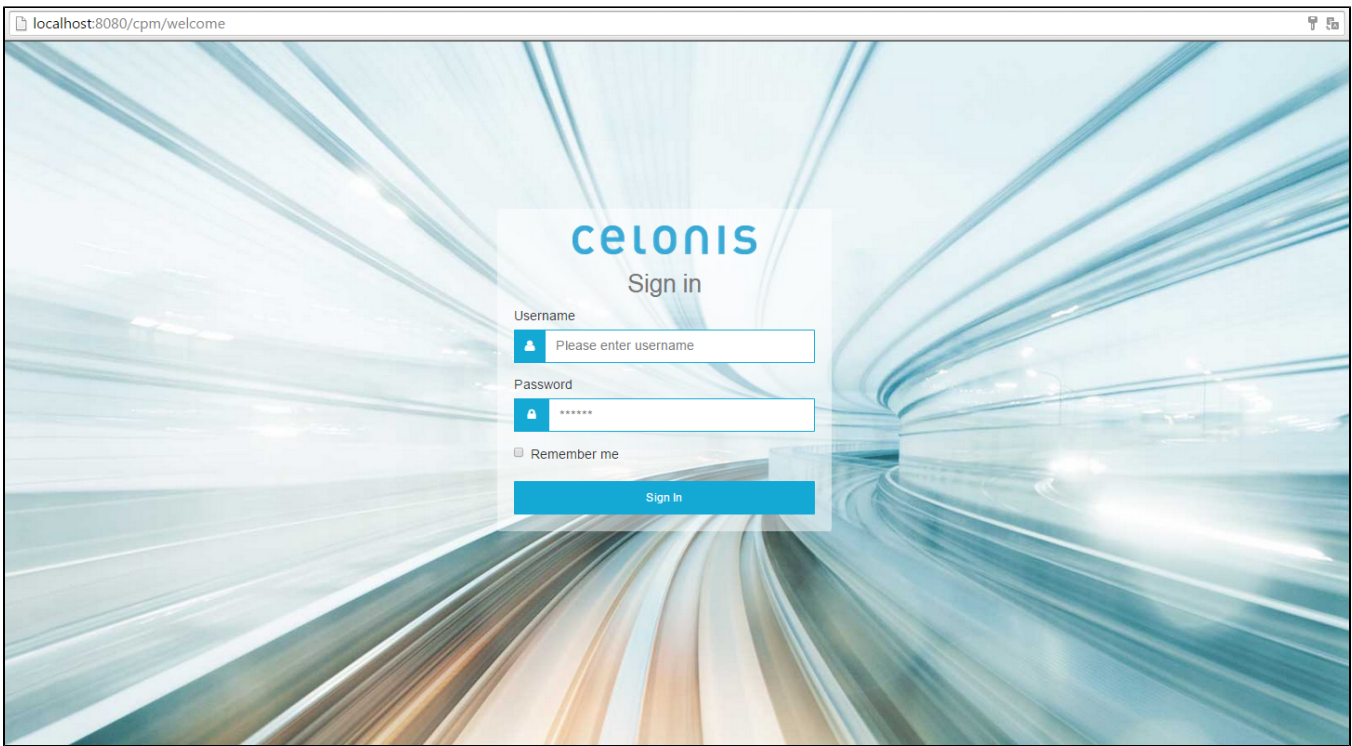
</Host>
</Engine>
</Service>
</Server>
```

The “*path*” is what you have to open on the last step of this manual.

After that, the application server's *service* needs to be **restarted**.



Open *Celonis Process Mining* in your browser (Google Chrome or Mozilla Firefox preferably) to check if the application has started. (<http://localhost:8080/cpm>)



You have successfully finished the installation!